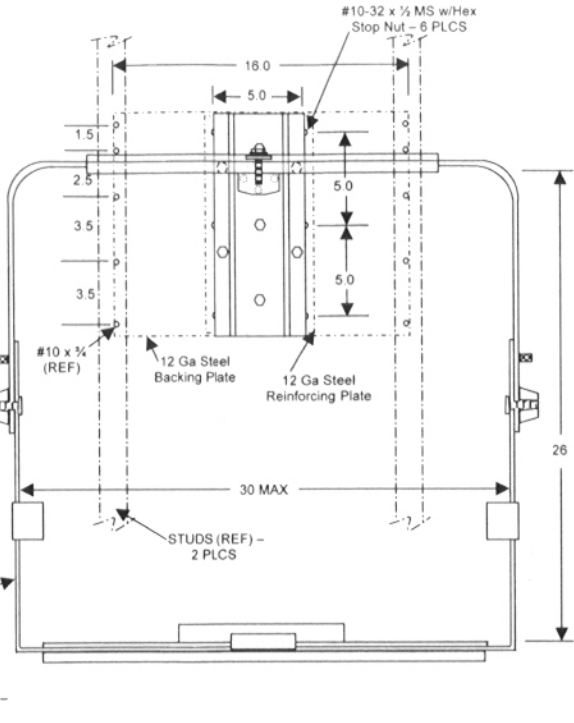
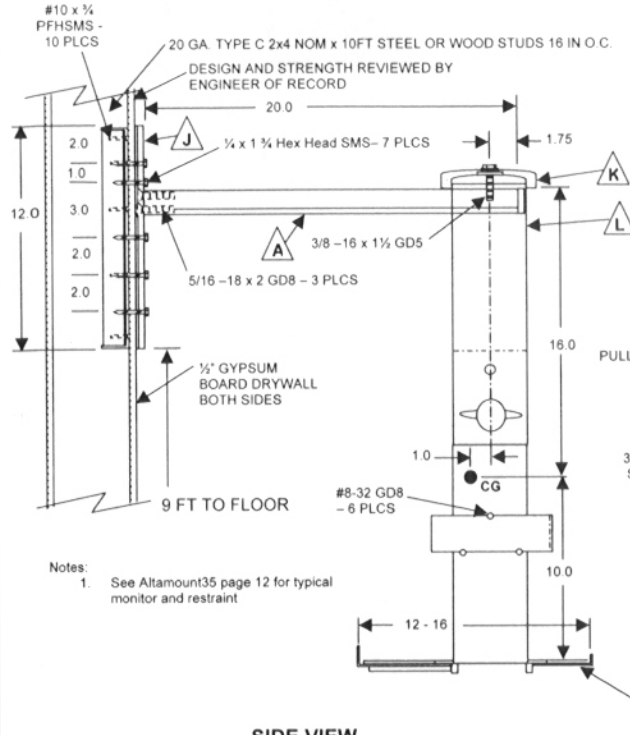


**MAXIMUM LOAD – 40KG / 88 LBS
DOUBLE STUD INSTALLATION**



Notes:
1. See Altamount35 page 12 for typical monitor and restraint

SIDE VIEW

FRONT VIEW

A SEE PAGE 15 **J** **K** **L** SEE PAGE 17

TABLE A

Component	Size (inches)	Material	Fasteners	Notes
Backing Plate Assembly	12.0 x 16.0	12 Gauge CRS	10 ea. #10 x 1/4 PFHMS* 10 ea. #6 or greater 2-1/4 Drywall Wood Screws** 6 ea. #10-32 x 1/2 MS w/ hex stop nut	*To 20 Ga 1-1/4 x 3-1/2 or better Steel Studs **To 1-1/2 x 3-1/2 or better Wood Studs
Wall Plate J	12.0 x 5.0	Westbrook Engineering Proprietary 6063-T6 Aluminum Extrusion	7 ea. 1/4 x 1 1/4 Hex Head Tapping Screw	Wall Plate to Backing Plate
Arm A	20.0 x 2.25 x 1.25	Westbrook Engineering Proprietary 6063-T6 Aluminum Extrusion	3 ea. 5/16-18 x 2 Flathead Torx40TS	Arm to Wall Plate
Yoke Assembly K L	26.0 x 26.0	Top -Westbrook Engineering Proprietary 6063-T6 Aluminum Extrusion Bottom - 10 Gauge CRS	1 ea. 3/8 -16 x 1 1/2 GD5	Yoke to Arm TV/Monitor attached to yoke/tray with ASRS 27 Restraint System
Tray	24 x 12	16 Gauge CRS		

APPROVED
Fixed Equipment Anchorage
Office of Statewide Health Planning and Development
OPA-0644
on
Tuesday, February 15, 2005
**** Valid for 3 Years Maximum ****
Anthony R. Pike
Anthony R. Pike (916) 654-1477



©COPYRIGHT 2004. THIS DOCUMENT CONTAINS INFORMATION WHICH SHALL NOT BE REPRODUCED, TRANSFERRED TO OTHER DOCUMENTS, DISCLOSED TO OTHERS USED FOR MANUFACTURING, OR ANY OTHER PURPOSE, WITHOUT THE WRITTEN AUTHORIZATION FROM WESTBROOK ENGINEERING, INC.

**TELEMOUNT 20-27
COMBINATION WALL MOUNT**

Part #: TEL2027CB

Material: See Table A

Tolerance: 0.00 +/- .005
0.000 +/- .003
All dimensions in inches
Drawn by: MM
Date: 8/12/04
File: TEL27CB_6

Westbrook Engineering, Inc.
(650) 594-0962