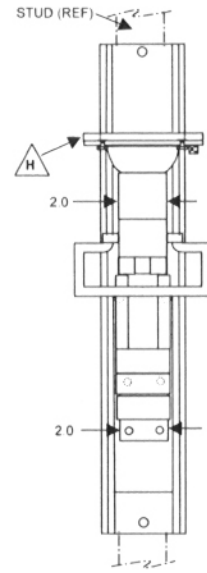
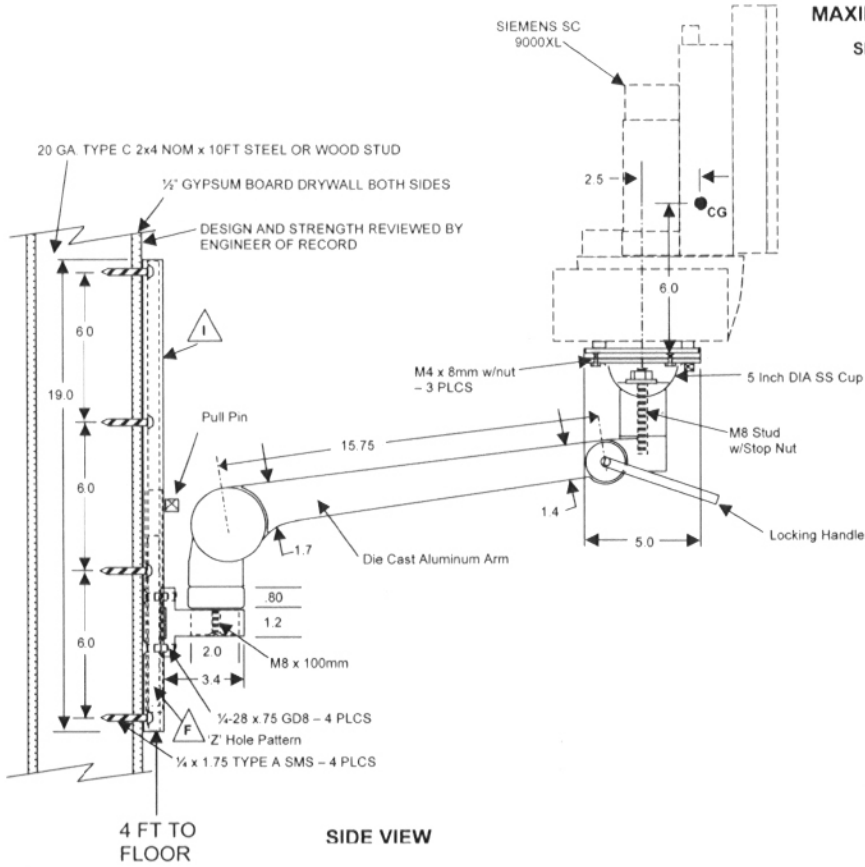


MAXIMUM LOAD – 12 KG / 26 LBS
SINGLE STUD INSTALLATION



FRONT VIEW
 (Patient Monitor not shown)

APPROVED
Fixed Equipment Anchorage
 Office of Statewide Health Planning and Development
 OPA-0644
 on
 Tuesday, February 15, 2005
 ***** Valid for 3 Years Maximum *****
Anthony R. Pike
 Anthony R. Pike (916) 654-1477



I SEE PAGE 16 **F** SEE PAGE 17

TABLE A

Component	Size (inches)	Material	Fasteners	Notes
Wall Track I	19.0 x 3.5	Westbrook Engineering Proprietary 6063-T6 Aluminum Extrusion	4 ea. 1/4 x 1.75 Phillips Panhead SMS	To a Single 20 Ga. 1-1/4 x 3-1/2 or better Steel Stud Minimum 313 lbs pullout Wood or Steel
Slide F	2.75 x 7.2 x .5	Westbrook Engineering Proprietary 6063-T6 Aluminum Extrusion with Delrin Buffers	4 ea. 1/4 - 28 x .75 GD8 FHMS	Slide to Arm
Arm Assembly w/Slide and Cup	15.75 x 2.0 x 1.5	Krömker Proprietary Cast Aluminum	1 ea. M8 x 100mm FHMS 1 ea. M8 x 90mm Stud w/Stop Nut	
Mounting Plate H	5.0" x 5.0" x 0.2"	Westbrook Engineering Proprietary 6063-T6 Aluminum Extrusion	3 ea. M4 x 8mm w/Hex Nuts	

©COPYRIGHT 2004. THIS DOCUMENT CONTAINS INFORMATION WHICH SHALL NOT BE REPRODUCED, TRANSFERRED TO OTHER DOCUMENTS, DISCLOSED TO OTHERS USED FOR MANUFACTURING, OR ANY OTHER PURPOSE, WITHOUT THE WRITTEN AUTHORIZATION FROM WESTBROOK ENGINEERING, INC.

ARTICULATED MEDICAL MONITOR WALL MOUNT

Part #: ART16T19MP5

Material: See Table A

Tolerance: 0.00 +/- .005
 0.000 +/- .003
 All dimensions in inches

Drawn by: MM
 Date: 8/12/04
 File: Articulated_6

Westbrook Engineering, Inc.
 (650) 594-0962