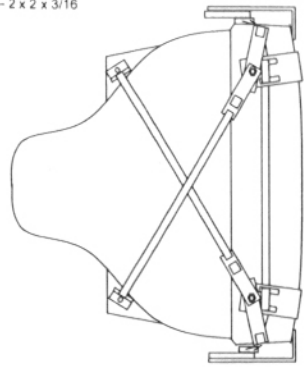
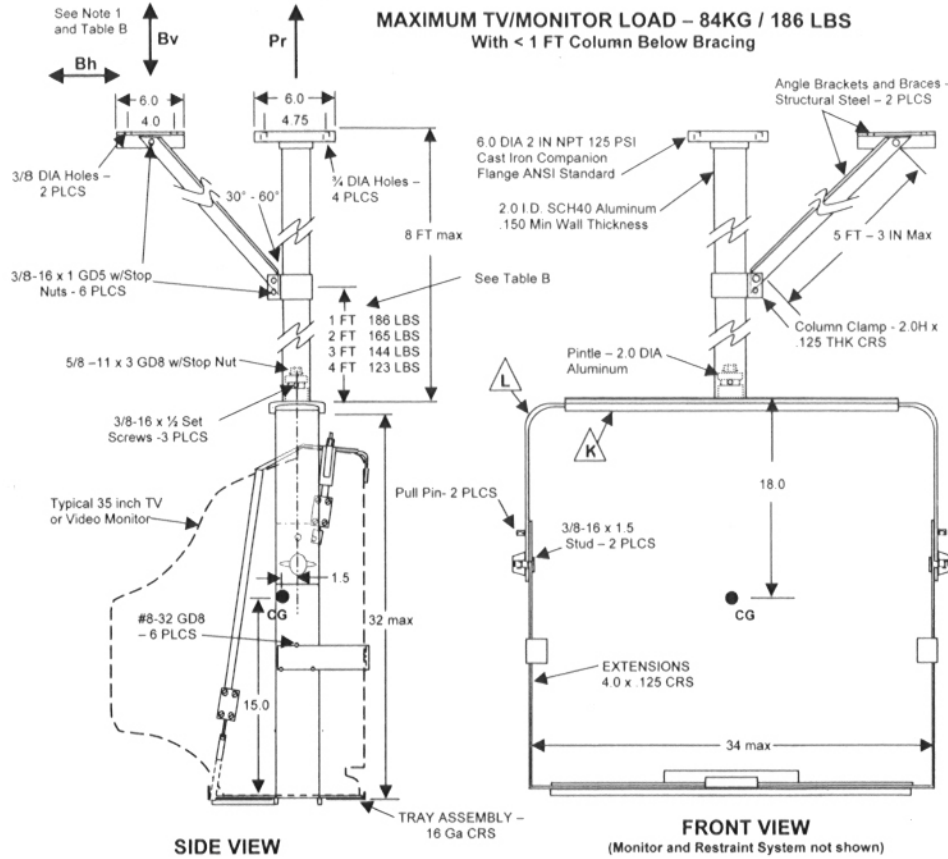


MAXIMUM TV/MONITOR LOAD – 84KG / 186 LBS
 With < 1 FT Column Below Bracing



DETAIL A - TOP VIEW OF RESTRAINT SYSTEM

- Notes:
1. Separate OSHPD approval required for the anchorage. Project Architect/Engineer of Record is responsible to provide for the anchorage design based on maximum ultimate load.

TABLE B

ANCHORAGE LOADS (Pounds)				
Column Length Below Clamp	W	Pr	Bv	Bh
1 FT	186	2160	1658	670
2 FT	165	2143	1697	594
3 FT	144	2067	1679	518
4 FT	123	1935	1603	443

Anchorage Loads based on
 2.7W Vertical Load
 3.6W Horizontal Load

APPROVED
Fixed Equipment Anchorage
 Office of Statewide Health Planning and Development
 OPA-0644
 on
 Tuesday, February 15, 2005
 **** Valid for 3 Years Maximum ****
Anthony R. Pike
 Anthony R. Pike (916) 654-1477



L K SEE PAGE 17

TABLE A

Component	Size (inches)	Material	Fasteners	Notes
Column	96 max x 2.0 I.D.	Schedule 40 Aluminum	4 ea. 3/8 - 16 x 1 1/4 Hex Head MS GD5 w/stop nut 3 ea. 3/8 - 16 x 1/2 SOC Set MS	Fasteners to structure specified by Site Engineer
Brace - 2 ea.	80 max x 1-1/4 x .180	Angle CRS	2 ea. 3/8 - 16 x 1 1/4 Hex Head MS GD5 w/stop nut	Fasteners to structure specified by Site Engineer
Yoke Assembly L K	32 x 34 max	Top - Westbrook Engineering Proprietary 6063-T6 Aluminum Extrusion Bottom - 10 Gauge CRS	1 ea. 5/8 - 11 x 3 Button Head Soc Cap MS w/stop nut	
Tray	28 x 14	16 Gauge CRS		

©COPYRIGHT 2004. THIS DOCUMENT CONTAINS INFORMATION WHICH SHALL NOT BE REPRODUCED, TRANSFERRED TO OTHER DOCUMENTS, DISCLOSED TO OTHERS USED FOR MANUFACTURING, OR ANY OTHER PURPOSE, WITHOUT THE WRITTEN AUTHORIZATION FROM WESTBROOK ENGINEERING, INC.

ALTA MOUNT CEILING BRACKET
 for 20 inch to 35 inch TV or Monitors

Part #: ALT2035
 Material: See Table A
 Tolerance: 0.00 +/- .005
 0.000 +/- .003
 All dimensions in inches
 Drawn by: MM
 Date: 8/12/04
 File: Altmount35_6
Westbrook Engineering, Inc.
 (650) 594-0962